

# **Oadby and Wigston Borough Council**

**Officer Panel (COVID-19)**

**30 March 2020**

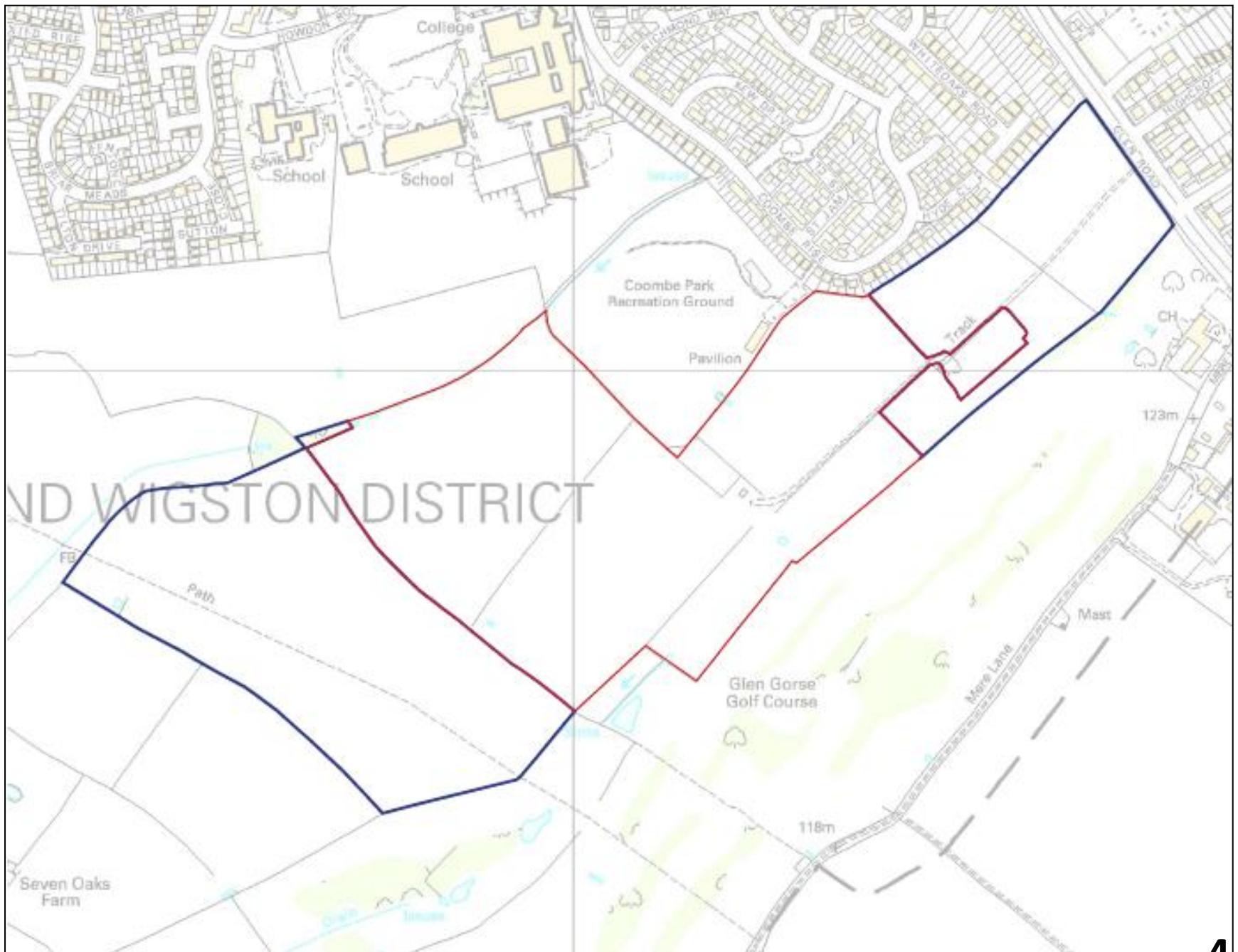
# Central Government Policy Advice:

## “What is a material planning consideration?”

- A material planning consideration is one which is relevant to making the planning decision in question (e.g. whether to grant or refuse an application for planning permission).
- The scope of what can constitute a material consideration is very wide and so the courts often do not indicate what cannot be a material consideration. However, in general they have taken the view that **planning is concerned with land use in the public interest, so that the protection of purely private interests such as the impact of a development on the value of a neighbouring property or loss of private rights to light could not be material considerations**”.

# **Application No. 19/00356/OUT**

Land at Cottage Farm, Glen Road,  
Oadby, Leicestershire

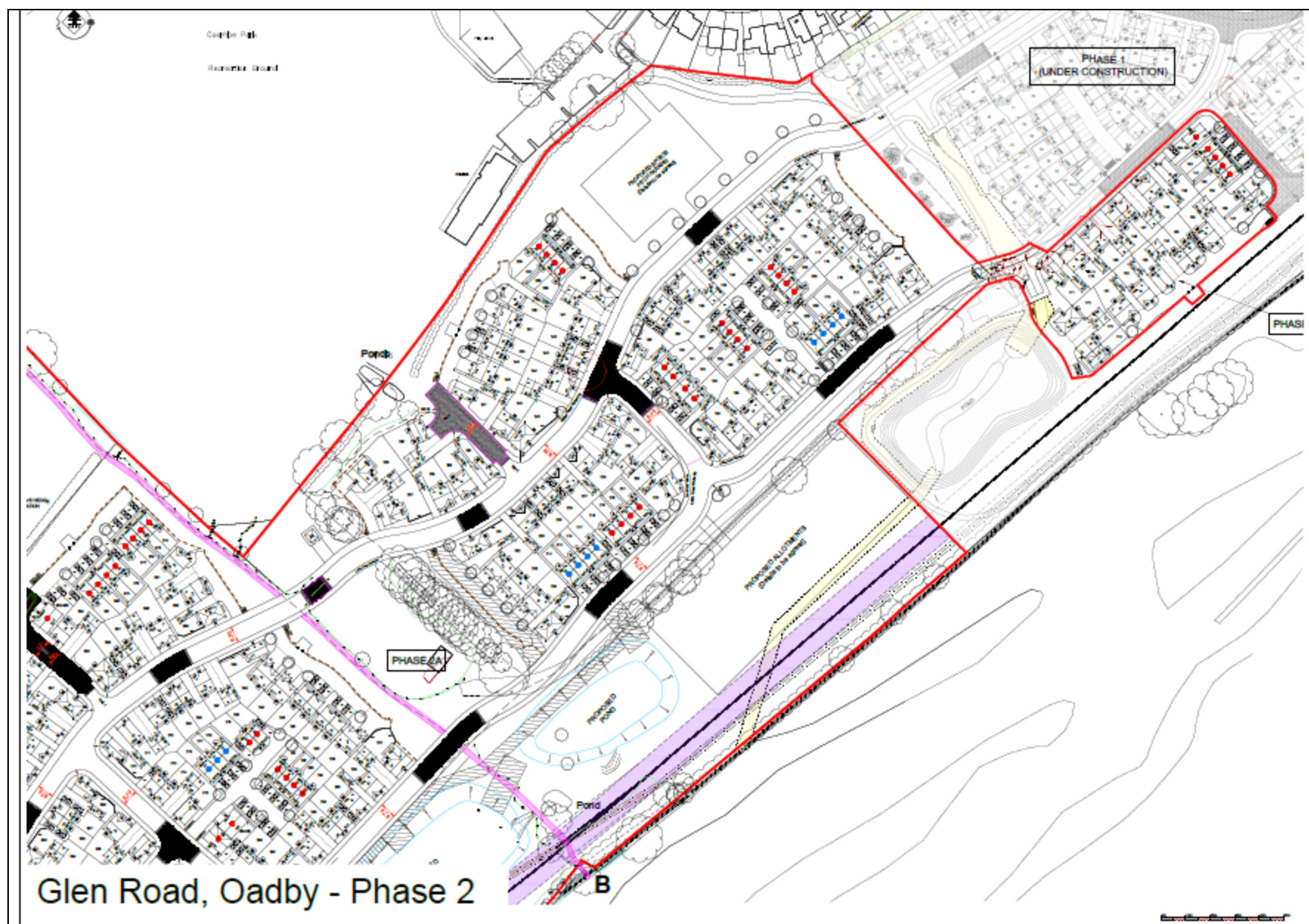








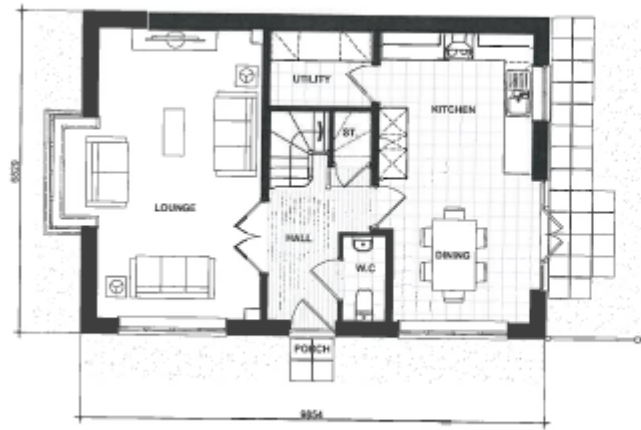








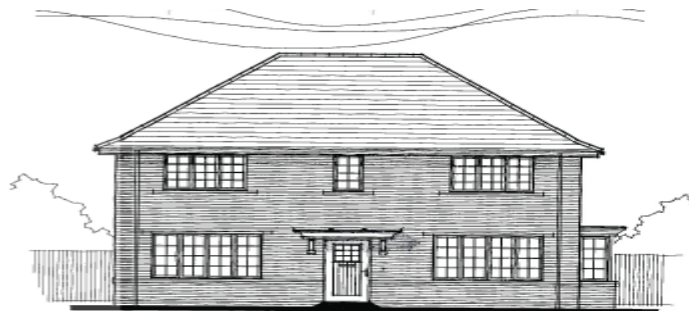




GROUND FLOOR PLAN



FIRST FLOOR PLAN



FRONT ELEVATION



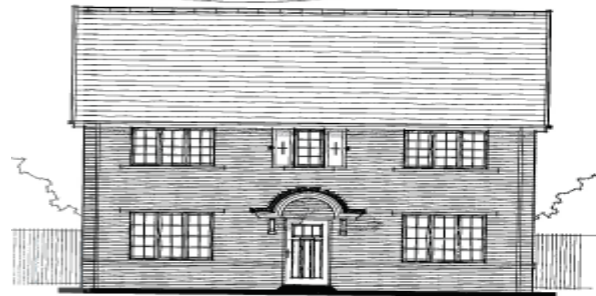
SIDE ELEVATION



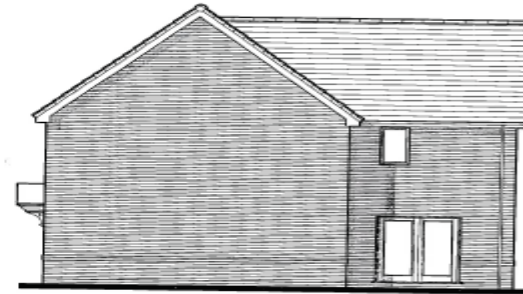
REAR ELEVATION



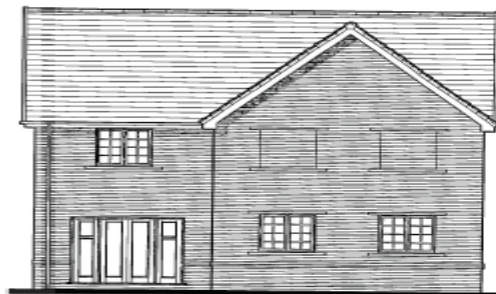
SIDE ELEVATION



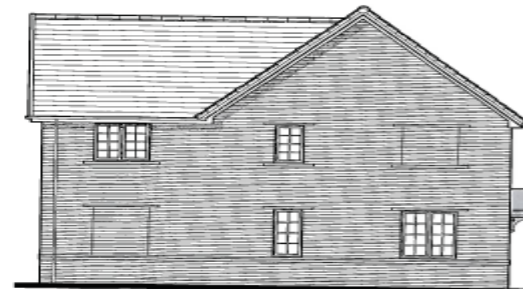
FRONT ELEVATION



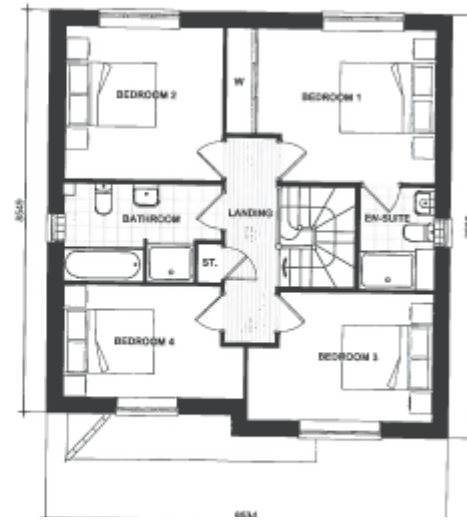
SIDE ELEVATION



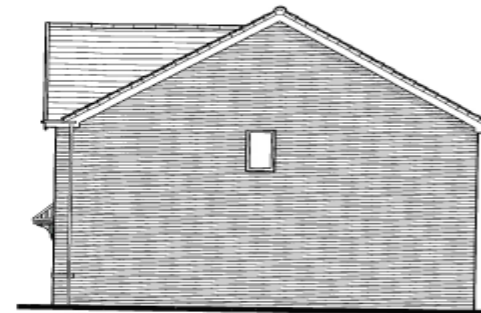
REAR ELEVATION



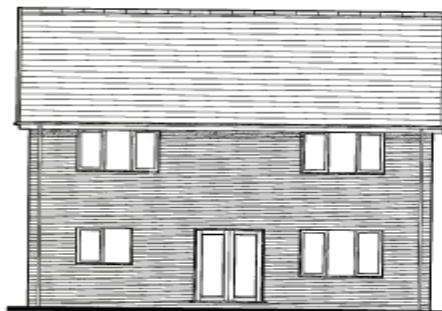
SIDE ELEVATION



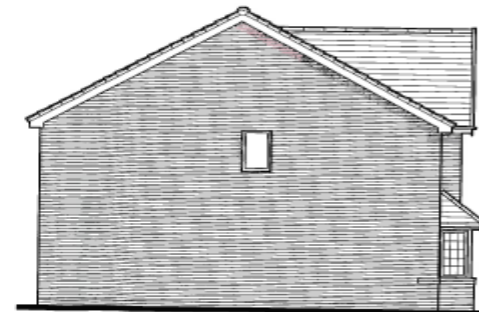
FRONT ELEVATION



SIDE ELEVATION

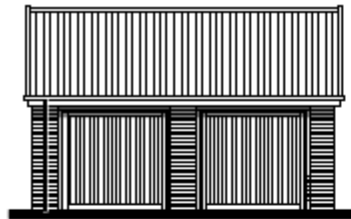


REAR ELEVATION



SIDE ELEVATION

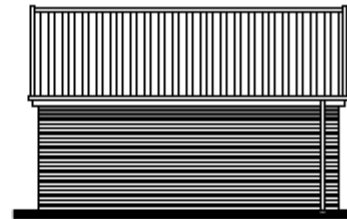




FRONT ELEVATION



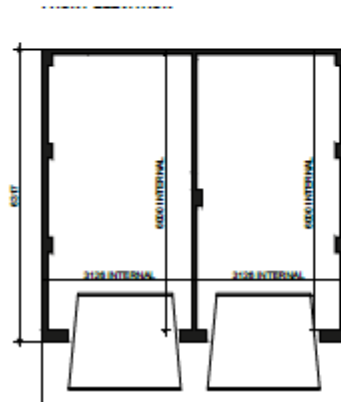
SIDE ELEVATION



REAR ELEVATION



SIDE ELEVATION



Single

